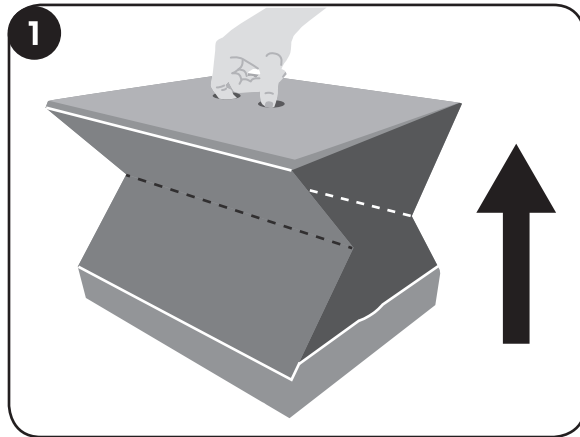
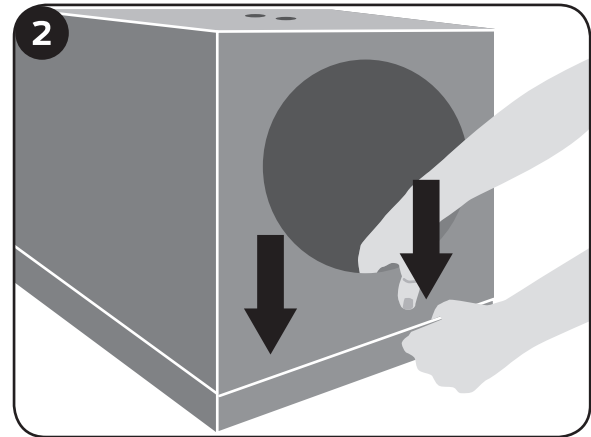


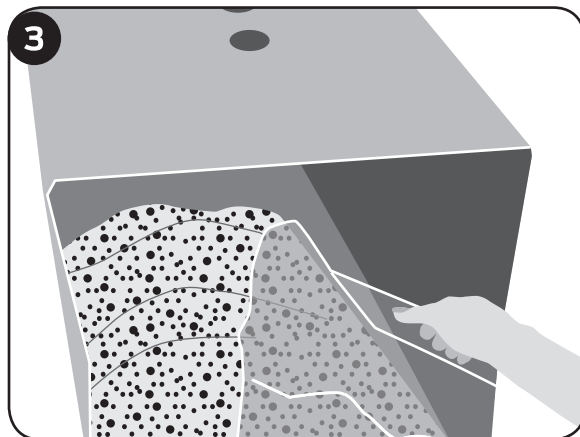
Instructions for Assembly



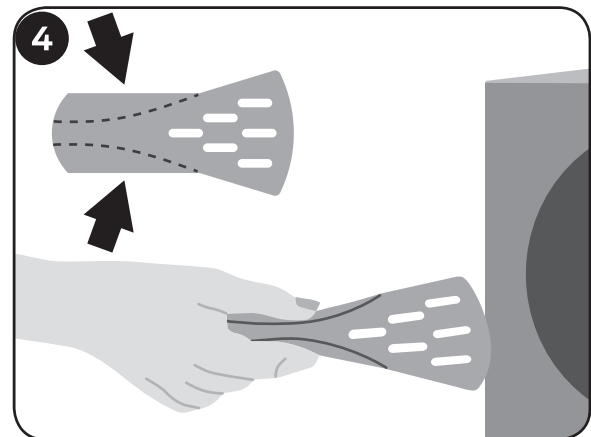
1. Using the finger holes on the top of the box, pull up on the box until the sides are fully extended.



2. Pull the entrance flap down from under the top of the box. Pull the flap completely forward, and lock both tabs securely in the slots in the bottom tray.



3. Cut the bag of litter across the top, and pour the crystals into the base tray of the box. Pull the back flap down and completely forward, and lock the single tab into the slot in the bottom tray.



4. The disposable scoops fold up on both sides so that they are easier to handle. Use the scoops as needed through the opening on the box.

Have questions about your Disposable Litter Box or need training tips for your pet?

Our Customer Care representatives are here to help you.

Call our USA-based Customer Care Center at

+1 (866) 381-2785

USA & Canada: Mon–Fri 8am–8pm EST | Sat 9am–5pm EST

This product includes a one year warranty.

Call, click, or chat with us before you return your product.

premierpet.com