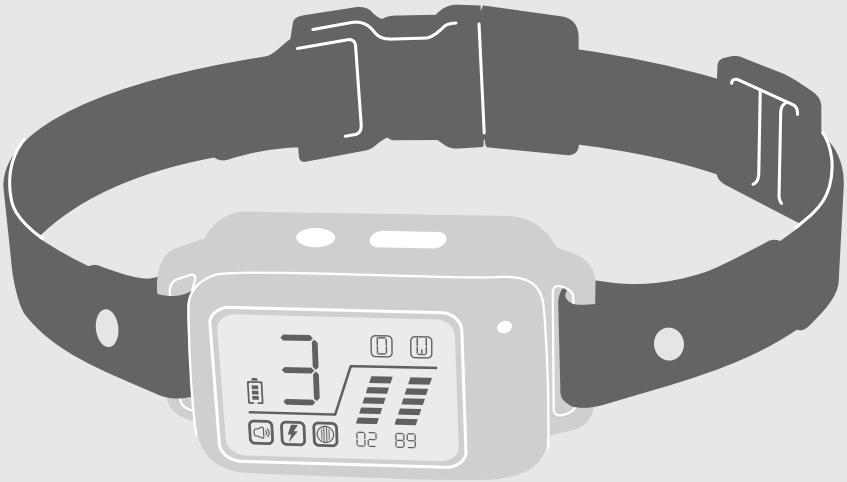


Bark Collar with Digital Display

GBC00-17993 | Product Manual



Have questions about your Bark Collar or need training tips for your pet?

Our Customer Care representatives are here to help you.

Call our USA-based Customer Care Center at

+1 (866) 381-2785

USA & Canada: Mon-Fri 8am-8pm EST | Sat 9am-5pm EST


This product includes a one year warranty.

Call, click, or chat with us before you return your product.

premierpet.com

Important Safety Information

Explanation of Attention Words and Symbols Used in This Guide

 This is the safety alert symbol. It is used to alert you to potential personal injury hazards. Obey all safety messages that follow this symbol to avoid possible injury or death.

⚠ WARNING **WARNING** indicates a hazardous situation which, if not avoided, could result in death or serious injury.

⚠ CAUTION **CAUTION**, used with the safety alert symbol, indicates a hazardous situation which, if not avoided, could result in minor or moderate injury.

CAUTION **CAUTION**, used without the safety alert symbol, indicates a hazardous situation which, if not avoided, could result in harm to your pet.

⚠ WARNING

- Do not use this product if your dog is prone to aggressive behavior. Aggressive dogs can cause severe injury and even death to their owner and others. If you are unsure whether this product is appropriate for your dog, please consult your veterinarian or a certified trainer.
- This device contains Lithium-Ion (Li-Ion) batteries; never incinerate, puncture, deform, short-circuit, or charge with an inappropriate charger. Fire, explosion, property damage, or bodily harm may occur if this warning is not followed.

⚠ CAUTION

- This product is not a toy. Keep it away from the reach of children. Use it only as a bark deterrent.

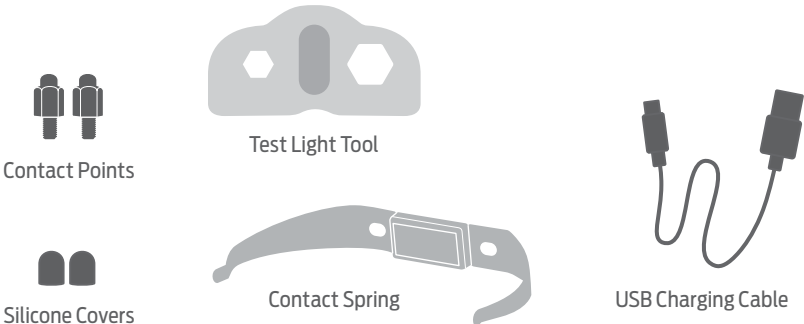
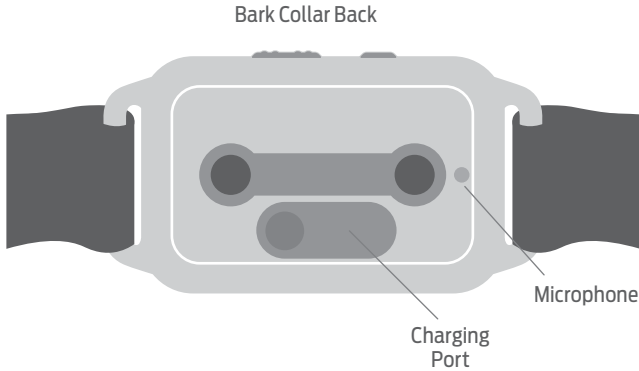
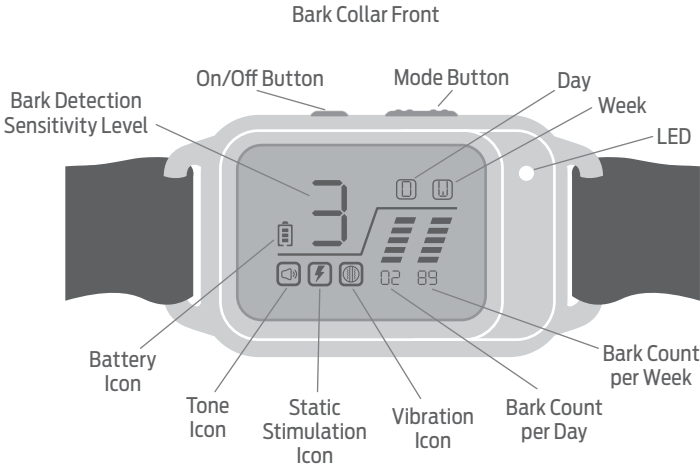
CAUTION

- Proper fit of the collar is important. A collar worn for too long or made too tight on the pet's neck may cause skin damage ranging from redness to pressure ulcers. This condition is commonly known as bed sores.
- Avoid leaving the collar on a pet for more than 12 hours per day.
- When possible, reposition the collar on the pet's neck every 1 to 2 hours.
- Regularly recheck the fit to prevent excessive pressure; follow the instructions in this manual.
- You may need to trim the hair in the area of the contact points. However, never shave the dog's neck; this may lead to a rash or infection.
- Never connect a leash to a collar with contact points. It will cause excessive pressure on the contact points.
- When connecting a leash to a separate collar, do not allow it to put pressure on the collar.
- Wash the dog's neck area and the contact points of the collar weekly with a damp cloth.
- Examine the contact area daily for signs of a rash or a sore.
- If a rash or sore is found, discontinue using this product until the skin has healed.
- If the condition persists beyond 48 hours, see your veterinarian.
- For additional information on bed sores and pressure necrosis, please visit our website.
- This product is only for use with healthy pets. If you're not certain that your pet is in good health, we recommend that you take your pet to a veterinarian before using this product.

How it Works

The Premier Pet® Bark Collar effectively deters barking when it is worn. The first time your dog barks, the collar will issue a tone and vibration correction. If your dog barks again, the collar will issue a static correction. These static corrections will increase in intensity with each successive bark until the barking stops. As a built-in safety feature, after your dog has received 5 static corrections, the collar will shut off for 30 seconds and the display will show a "P". To exit the protection state, press any button or wait 30 seconds for the collar to restart.

What's Included



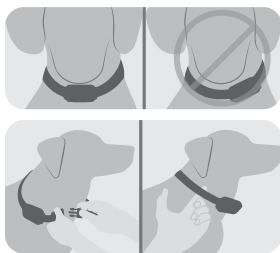
Fit the Collar

Install Contact Points

1. Short contact points are included, use the test light tool to tighten the contact points until snug. DO NOT over tighten.
2. The contact spring can also be used with or without the contact points for additional neck contact.
3. The silicone covers can be used for dogs that may have sensitivity to the contact points. The static correction emits through the silicone covers.

Important: The proper fit and placement of your collar is important for effective operation.

1. Start with the collar turned off and your dog standing comfortably, not sitting.
2. Remove all other collars your dog may be wearing. Place the bark collar around his neck, directly under his chin. Center the contact points underneath your dog's neck, touching the skin. *NOTE: It is sometimes necessary to trim the hair around the contact points to make sure that contact is consistent.*
3. Check the tightness of the collar by inserting one finger between the collar and your dog's neck. The fit should be snug but not constricting.
4. Allow your dog to wear the collar for several minutes, then recheck the fit. Check the fit again as your dog becomes more comfortable with the collar.



CAUTION

Do not shave the pet's neck, as this may increase the risk of skin irritation. The collar should not be worn for more than 12 hours out of every 24-hour period. Leaving the collar on too long could lead to skin irritation.

Charge the Collar

Excessive charging can shorten battery life. Only charge your collar when the batteries are low.

1. Lift the rubber cover covering the charging port, then plug in and fully charge the bark collar. The LED on the bark collar will be solid red when charging and will turn green when the bark collar is fully charged.
2. When the bark collar is charged, remove the charging cable and replace the rubber cover. The rubber cover covering the charging port must be in place for the bark collar to be waterproof.

Turn the Collar On/Off

To Turn the Collar On

Press and hold the on/off button for 2 seconds. The bark collar turns on. During use, the LED will flash once every 5 seconds when the battery is charged, and three times every 5 seconds when the battery is low.

To Turn the Collar Off

Press and hold the on/off button for 2 seconds. The bark collar turns off.


Quick Tip: To extend battery life, turn off the bark collar when not in use.

Adjusting the Bark Detection Sensitivity Level


The collar has 6 bark detection sensitivity levels. To increase the sensitivity level, press the on/off button repeatedly. The number on the collar display will change to indicate the selected sensitivity level (1-6); the higher the number, the more sensitive the collar will be to your dog's barks. Keep in mind that increasing the sensitivity level too much may cause your dog to be corrected for other sounds nearby. *Note:* Level 7 is for testing only.

Turn the Static Correction On/Off

Turn the Static Correction Off

Press and release the mode button. The static correction symbol  on the digital display will turn off. The bark collar will use increasing tone and vibration to correct.

Turn the Static Correction On

Press and release the mode button. The static correction symbol  on the digital display will turn on. The bark collar will use increasing tone, vibration and static correction to correct.

Test the Collar

1. With the bark collar on, press the mode button repeatedly to select sensitivity level 7 (testing mode).
 2. Place the bottom of the test light tool on the two contact points ensuring the metal wires directly touch the top of the contact points.
 3. Speak loudly into the microphone on the back of the collar. The bark collar will tone and vibrate after the first sound and the test light will illuminate after the second sound.
 4. After testing, return the collar to the desired sensitivity level before placing it on your dog.
-

Regular Maintenance

- Check contact points for tightness weekly.
 - Clean contact points with a damp cloth weekly.
 - Check your dog's neck for irritation and wash neck weekly.
-

Barking Records

The bark collar will record the number of times your dog barks per day and per week.

Barks per day are displayed under the yellow D on the digital display. Each blue bar represents 5 barks. The numeric value below the blue bars indicates the exact number of daily barks (up to 99). This numeric value will reset every 24 hours.

Barks per week are displayed under the orange W on the digital display. Each yellow bar represents 20 barks. The numeric value below the yellow bars indicates the exact number of barks (up to 99) for the previous 7 days.

NOTE: Hold the on/off button and the mode button at the same time for 3 seconds to reset the daily and weekly bark numbers to 0.

Terms of Use and Limitation of Liability

1. **Terms of Use**

The use of this product is subject to your acceptance without modification of the terms, conditions and notices contained with this product. Use of this product implies acceptance of all such terms, conditions and notices. If you do not wish to accept these terms, conditions and notices, please return the product, unused, in its original packaging and at your own cost and risk to the relevant Customer Care location together with proof of purchase for a full refund.

2. **Proper Use**

Proper use includes, without limitation, reviewing the entire Product Manual and any specific safety information statements. The specific temperament or size/weight of your pet may not be suitable for this product. If you are unsure whether this product is appropriate for your pet, please consult your veterinarian or certified trainer prior to use. For products used with pets where training is desired, Radio Systems Corporation recommends that these training products are not used if your pet is aggressive and accepts no liability for determining suitability in individual cases.

3. **No Unlawful or Prohibited Use**

This product is designed for use with pets only. This product is not intended to harm, injure or provoke. Using this product in a way that is not intended could result in violation of Federal, State or local laws.

4. **Limitation of Liability**

In no event shall Radio Systems Corporation or any of its associated companies be liable for (i) any direct, indirect, punitive, incidental, special or consequential damage and/or (ii) any loss or damages whatsoever arising out of or connected with the use or misuse of this product. The Purchaser assumes all risks and liability from the use of this product to the fullest extent permissible by law.

5. **Modification of Terms and Conditions**

Radio Systems Corporation reserves the right to change the terms, conditions and notices governing this product from time to time. If such changes have been notified to you prior to your use of this product, they shall be binding on you as if incorporated herein.

Warranty

One Year Non-Transferrable Limited Warranty

This Product has the benefit of a limited manufacturer's warranty. Complete details of the warranty applicable to this Product and its terms can be found at premierpet.com.

Compliance FCC

This device complies with part 15 of the FCC Rules. Operation is subject to the following two conditions: (1) This device may not cause harmful interference, and (2) this device must accept any interference received, including interference that may cause undesired operation.

NOTE: This equipment has been tested and found to comply with the limits for a Class B digital device, pursuant to part 15 of the FCC Rules. These limits are designed to provide reasonable protection against harmful interference in a residential installation. This equipment generates, uses, and can radiate radio frequency energy and, if not installed and used in accordance with the instructions, may cause harmful interference to radio communications. However, there is no guarantee that interference will not occur in a specific installation. If interference does occur to radio or television reception, which can be determined by turning the equipment off and on, the user is encouraged to try to correct the interference by one or more of the following measures:

- Reorient or relocate the receiving antenna.
- Increase the separation between the equipment and the receiver.
- Connect the equipment to an outlet on a circuit different from that to which the receiver is connected.
- Consult customer care, the dealer, or an experienced radio/TV technician for help.

CAUTION: Modification or changes to this equipment not expressly approved by Radio Systems Corporation may void the user's authority to operate the equipment.

Premier Pet®