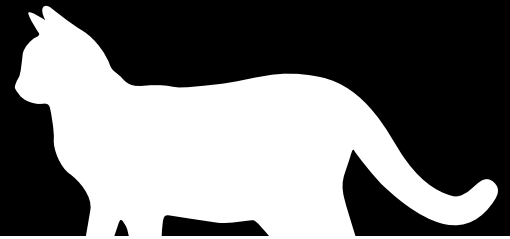
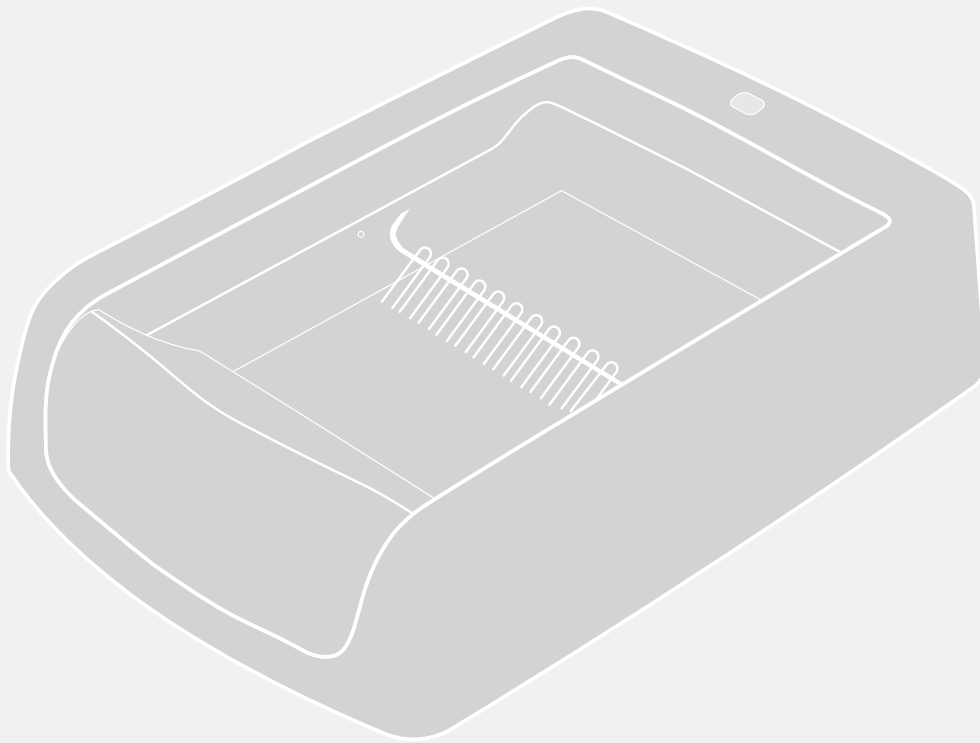


Premier Pet™



Auto-Scoop Crystal Litter Box System

GAL00-16809 | Product Manual



Have questions about your Litter Box
or need training tips for your pet?

Our Customer Care representatives are here to help you.

Call our USA-based Customer Care Center at

+1 (866) 381-2785

USA & Canada: Mon-Fri 8am-8pm EST | Sat 9am-5pm EST

This product includes a one-year warranty.

Call, click or chat with us before you return your product.

premierpet.com

Hereinafter Radio Systems Corporation and any other affiliate or Brand of Radio Systems Corporation may be referred to collectively as “We” or “Us”.

IMPORTANT SAFETY INFORMATION

Explanation of Attention Words and Symbols used in this Product Manual



This is the safety alert symbol. It is used to alert you to potential personal injury hazards. Obey all safety messages that follow this symbol to avoid possible injury or death.

⚠ WARNING

WARNING indicates a hazardous situation which, if not avoided, could result in death or serious injury.

⚠ CAUTION

CAUTION, used with the safety alert symbol, indicates a hazardous situation which, if not avoided, could result in minor or moderate injury.

CAUTION

CAUTION, used without the safety alert symbol, indicates a hazardous situation which, if not avoided, could result in harm to your pet.

NOTICE

NOTICE is used to address practices not related to personal injury.

⚠ WARNING

When using electric appliances, basic precautions should always be followed to reduce the risk of fire, electric shock and/or injury including the following:

- Read all the instructions before using the appliance.
- Do not submerge or expose the electrical components to water or cleaning solutions.
- To protect against electric shock, do not place the unit, electrical power adaptor or plug in water or other liquids. If the plug of the device gets wet, turn off the electricity to that electrical outlet. Do not attempt to unplug.
- Do not place or store unit where it can fall or be pulled into a tub or sink.
- Do not pull on the electrical power adaptor to remove the plug from the electrical outlet. To unplug, grasp the plug, not the power cord.
- Do not use accessories or attachments that are not recommended by the manufacturer as they may cause fire, electric shock or injury.
- Do not operate if the unit has a damaged electrical power adaptor or plug, if it is malfunctioning or has been damaged. Call the Customer Care Center immediately for further instructions.
- Pregnant women, babies, small children and immune-deficient individuals should avoid contact with cat litter waste. Cats' waste may contain toxoplasmosis bacteria that can be harmful to these individuals.
- Packaging material is not a toy. Keep away from children and pets.
- Keep plastic bags away from babies and small children. Do not use in cribs, beds, carriages or play pens. The thin film may cling to nose and mouth and prevent breathing.
- To reduce the risk of injury, close supervision is necessary when the unit is used by or near children. Do not allow small children to play with, in or around this device. It is not a toy.

⚠ CAUTION

- Avoid contact with moving parts.
- Do not allow anything to rest on the power cord. Do not plug in power adaptor in an area where people or animals may walk or trip on cord.
- Always unplug the unit when not in use, before putting on or taking off parts and before cleaning.
- Do not disassemble the unit while plugged in.
- The rake may move automatically when you connect the power to the litter box. Make sure there is nothing inside the litter box when you plug in the power cord.
- Wash your hands after handling used cat litter.

CAUTION

- Adult supervision is recommended during your cat's initial introduction.
- If your kitten is under 6 months of age, leave the unit UNPLUGGED and scoop waste until kitten is 6 months old.
- Not intended for use by handicapped, incapacitated or very old cats that might experience difficulty in entering or leaving the litter box.
- DO NOT ATTEMPT TO USE THIS PRODUCT FOR ANY OTHER PURPOSE. This product is designed for use with cats only. The litter box is intended solely for the safe elimination of cat waste. This device is not intended to harm, injure or provoke. Using this product in a way that is not intended could result in violation of federal, state or local laws.

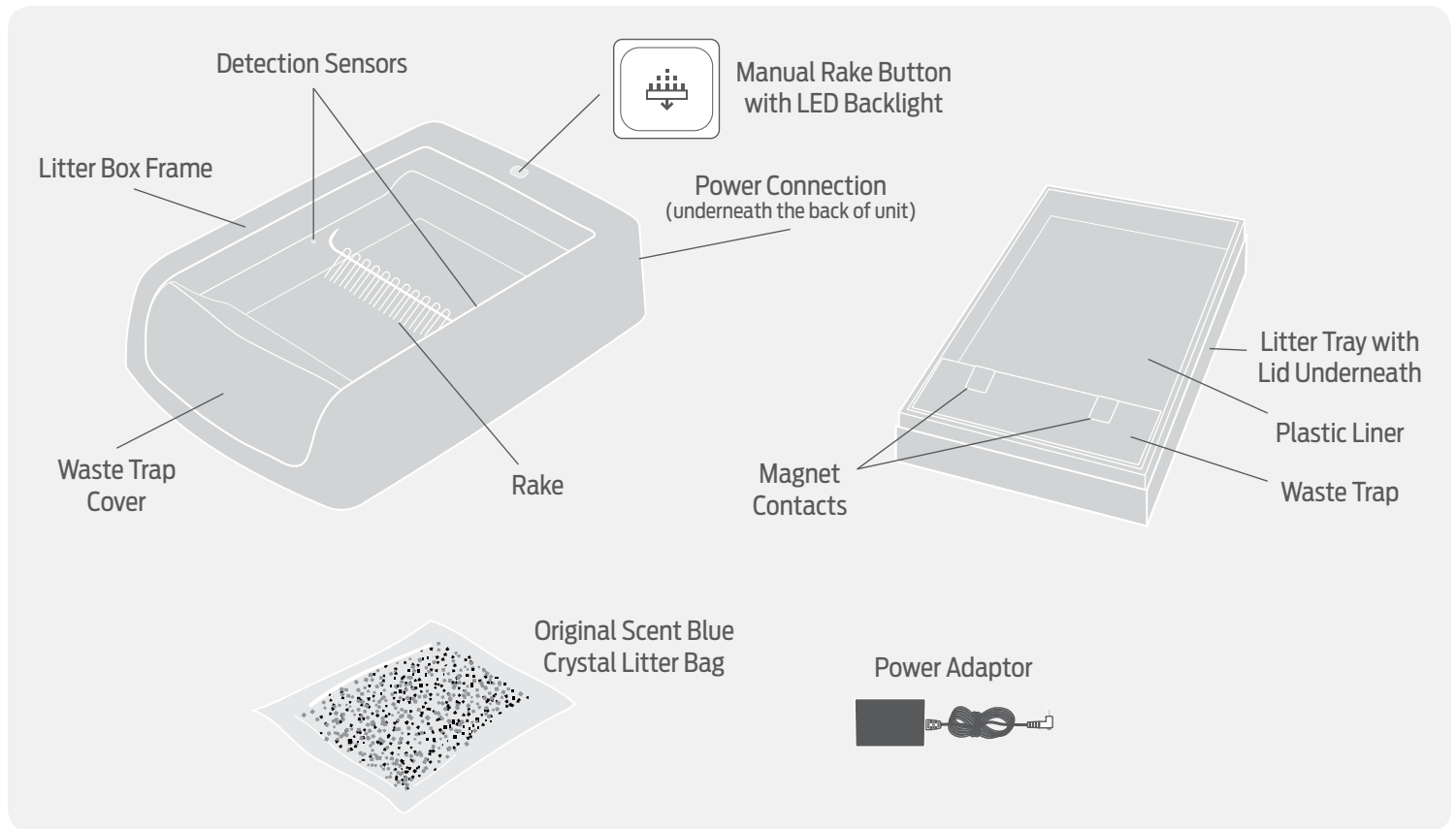
NOTICE

- Remove all packaging material before connecting the power adaptor.
- Do not place litter box on an unsteady surface.
- Do not use any other type of cat litter or tray. Only use Premier Pet™ Disposable Crystal Litter Trays and products with this litter box. The crystal litter is specially designed and pre-measured for optimal performance. Using a different type, size, too much or not enough litter can cause the litter box to malfunction. Using a different tray or litter may void the product warranty.
- Using the tray longer than recommended may result in leakage. Placing the litter box in a high humidity area, such as a bathroom or near a shower, may result in shorter tray life.
- If solid waste is collecting outside the waste trap, it is time to change the litter tray.
- Increased elimination habits of cats who consume a diet high in crude fiber, ash and by-products, cats older than 10 years of age and cats with diabetes, kidney and thyroid problems may result in a shorter litter tray life. Kittens may have softer stool than mature cats, which increases the likelihood that it may stick to the litter box rake.
- Do not use outdoors. FOR INDOOR HOUSEHOLD USE ONLY.
- Premier Pet™ Auto-Scoop Crystal Litter Box Systems should be used with healthy cats. We recommend that you take your cat to a veterinarian before using the litter box if he or she is not in good health.

SAVE THESE INSTRUCTIONS

What's Included

NOTE: The power adaptor is shipped in a small box. Do not discard packaging until setup is complete.



How It Works

The Premier Pet™ Auto-Scoop Crystal Litter Box System creates a clean litter box for your cat and provides peace of mind for you. The automatic litter box, when used with our specially-designed crystal litter, can be left alone for up to a month*. Simply pack one of the disposable trays pre-filled with Premier Pet™ Premium Crystal Litter under the litter box and forget about it. No more scooping, smelling or scrubbing! The crystal litter instantly absorbs urine and dries solid waste to remove odors instead of masking them. The automatic rake waits 20 minutes (this allows enough time for crystals to completely absorb any liquid) after your cat exits the litter box and then cleans the litter, raking the solid waste into the covered waste trap and giving your cat a fresh place to do their business. If your cat re-enters the box before the cleaning cycle starts, detection sensors will automatically reset the rake timer, keeping your cat safe. Once your waste trap is full, simply remove the litter tray, cover with the lid and toss in the trash for a quick, hygienic cleanup. You never have to see or touch messy waste again... unless you want to.

** Number of weeks depends on your cat's usage or number of cats.*

Setup & Operating Instructions

Cleaning Cycle

Sensors detect when your cat is inside the litter box. The timer starts a 20 minute countdown after your cat leaves the litter box to run the cleaning cycle. When the timer countdown begins, the LED light on the display will blink blue. If your cat returns to the litter box during the timer countdown, the timer stops. The timer countdown will reset when your cat leaves the litter box again.

Cleaning cycle automatically runs 20 minutes after your cat leaves the litter box and rakes solid waste into the covered waste trap.

Use the manual rake button to run the cleaning cycle at any time. Pressing the manual rake button while the rake is moving will pause the rake, then you will need to press it again to return the rake to the home position.

Cat Usage

For single or multiple-cat homes.

Best for cats under 15 pounds.

It is recommended to have more than one litter box for more than two cats.

CAUTION

If your kitten is under 6 months of age, leave the unit UNPLUGGED and scoop waste until kitten is 6 months old.

Litter Type:

Only use Premier Pet™ Disposable Crystal Litter Trays. The crystal litter is specially designed and pre-measured to work with the Auto-Scoop Crystal Litter Box System. The crystal litter absorbs urine and dries solid waste to remove odors. The crystal litter DOES NOT CLUMP.

DO NOT use any type of clay litter, natural litter or any other crystal litter.

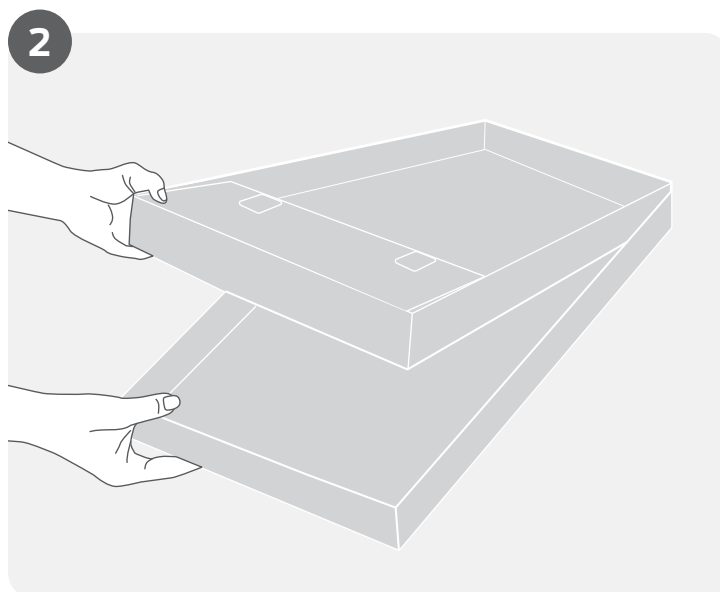
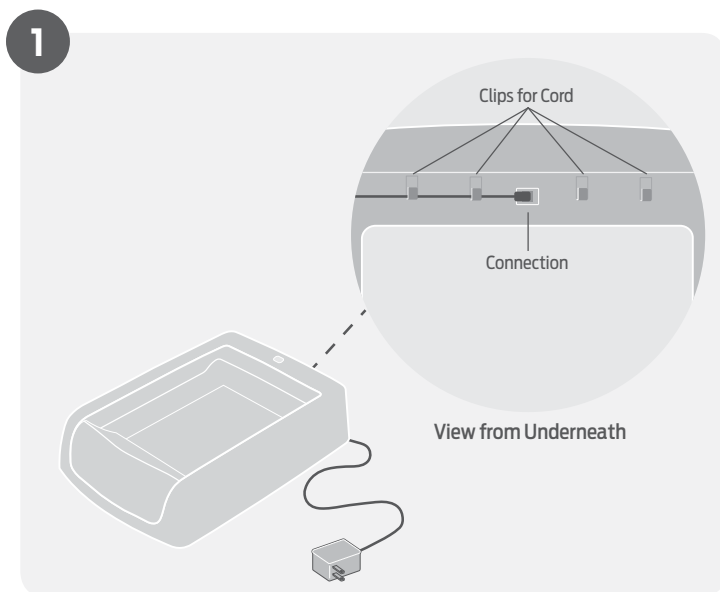
DO NOT use any other tray. Only use Premier Pet™ Auto-Scoop products.

Power

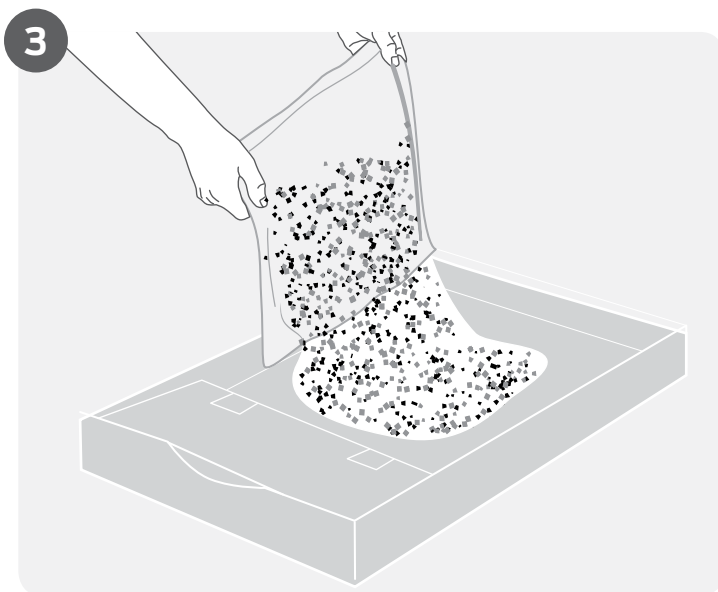
Low-Voltage AC Power Adaptor Operated.

Setup

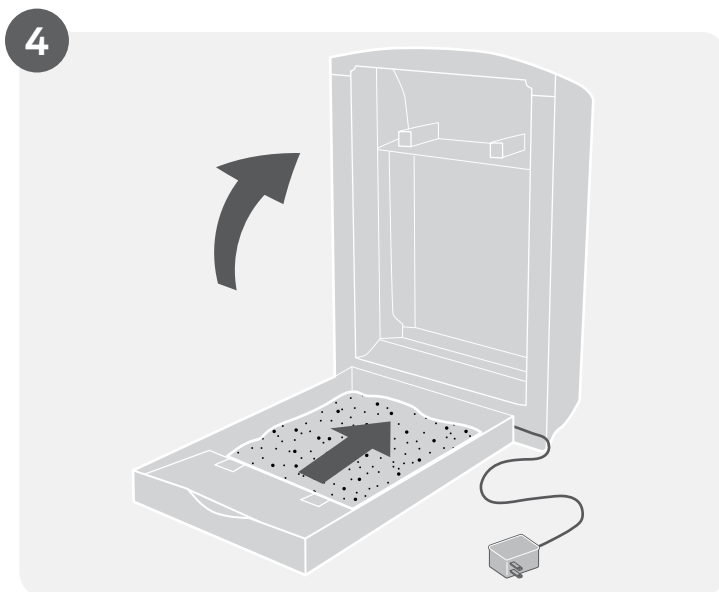
NOTE: Your Auto-Scoop Crystal Litter Box System is packaged for protection during shipping. Please remove all packaging material carefully. The power adaptor is shipped inside the packaging material. DO NOT discard packaging until you complete product setup.



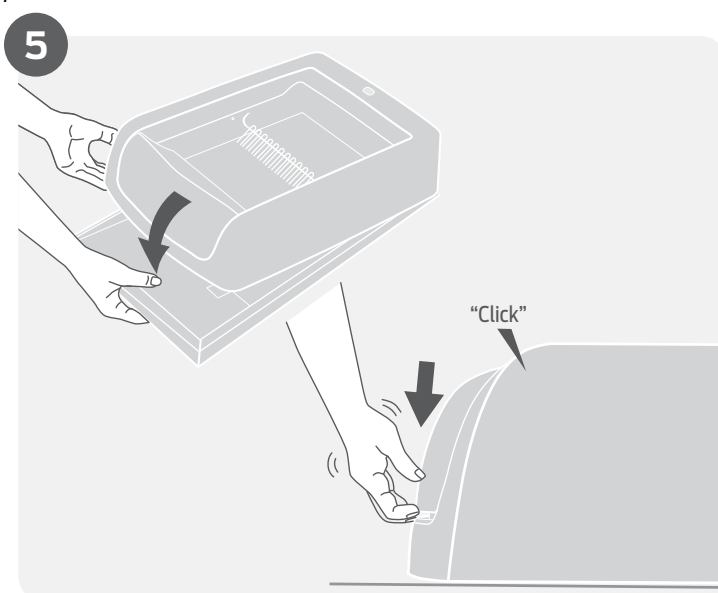
1. Find a clean, dry and level location with a standard power outlet nearby for your Auto-Scoop Crystal Litter Box System. Insert the end of the power adaptor into the connection located underneath the litter box frame at the back of the unit. The cord will fit into the clips under the unit to help keep it in place. Plug the power adaptor into a standard wall outlet. If the rake is not at the home position, it will automatically move to home position when power is connected. After the rake stops, the LED light will illuminate solid blue.
2. Pack the lid under the litter tray. The lid is extra protection against leaks and will be used later for disposal. Record the litter tray installation dates on the waste trap (see "Changing the Litter Tray" on page 8 for recommended litter tray replacement to help determine the change date).



3. Tear open the pre-filled Premier Pet™ Premium Crystal Litter bag and slowly pour the litter into the litter tray. Spread evenly within the tray. For best results, sprinkle a handful of litter into the waste trap.



4. Lift up the litter box frame and place the litter tray under the litter box frame with the waste trap and waste cover aligned on the same end. Slide the tray towards the back of the litter box until it touches.



5. Simply lower the litter box frame onto the litter tray. You should hear a click, which confirms the waste trap cover magnets have connected to the litter tray magnets. Just double check that the litter box is level and sitting over the litter tray. Make sure the LED light is solid blue. If it is not SOLID blue, please refer to the LED Indicator table in the "Troubleshooting" section on page 10.

⚠ WARNING

Packaging material is not a toy. Keep away from children and pets. Keep plastic bags away from babies and small children. Do not use in cribs, beds, carriages or play pens. The thin film may cling to nose and mouth and prevent breathing.

⚠ CAUTION

Do not allow anything to rest on the power cord. Do not plug in power adaptor in an area where people or animals may walk or trip on cord.

The rake may move automatically when you connect the power to the litter box. Make sure there is nothing inside the litter box when you plug in the power cord.

NOTICE

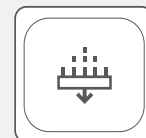
Do not use any other type of cat litter or tray. Only use Premier Pet™ Disposable Crystal Litter Trays and products with this litter box. The crystal litter is specially designed and pre-measured for optimal performance. Using a different type, size, too much or not enough can cause the litter box to malfunction. Using a different tray or litter may void the warranty.

Manual Rake Button

Although the Auto-Scoop Crystal Litter Box System is designed to automatically clean the litter box, you may manually run the cleaning cycle before the timer countdown by pushing the manual rake button on top of the litter box.

Push the manual rake button once to begin the cleaning cycle.

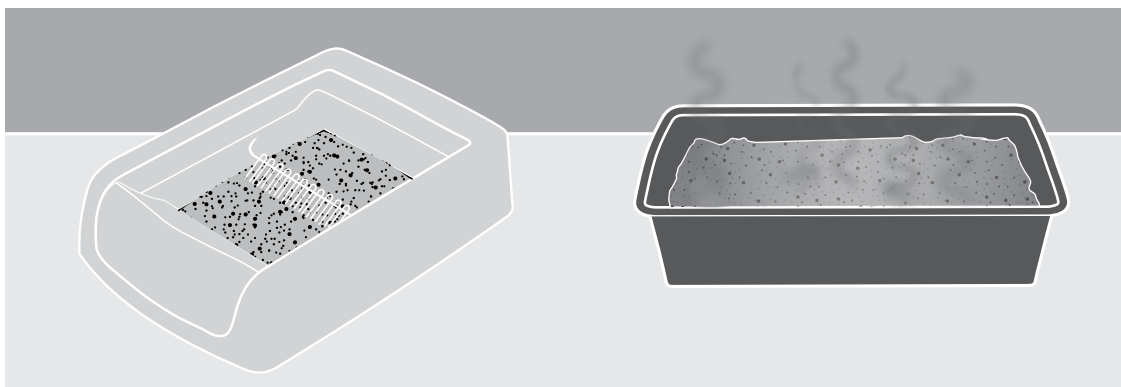
1. To stop the cleaning cycle and stop the rake, push the manual rake button again.
2. If the rake stops somewhere other than the home position at the back of the litter box, push the manual rake button to return the rake to home position. If the rake has been manually paused somewhere other than the home position, it will automatically return to home position after 10 minutes of inactivity.



Manual Rake Button
with LED Backlight

Tips & Maintenance

Transitioning Your Cat to the Litter Box



Most cats will easily adapt to the Auto-Scoop Crystal Litter Box System. Some cats may require an adjustment period to get used to their new litter box. Here are a few tips to help with the transition:

1. Place the new Auto-Scoop Crystal Litter Box System next to your cat's current litter box. Allow your cat to have access to both the old and new litter boxes for at least a week. This time may vary depending on the temperament of your cat.
2. Stop cleaning your cat's old litter box, allowing it to remain dirty. Cats prefer a clean litter box, and this will make the new litter box more appealing. Your cat should start using their new Auto-Scoop Litter Box System.

NOTE: Although the Auto-Scoop Crystal Litter Box System is quiet while running, you may want to leave it unplugged for a few days so your cat can get used to the new box without any distractions. If you leave it unplugged, you will need to manually scoop waste from the litter box until your cat is fully transitioned.

3. Once your cat has transitioned to the new litter box, just plug it in and remove the old litter box from the area.

For Kittens Under 6 Months Old

CAUTION

If your kitten is under 6 months of age, leave the unit UNPLUGGED and scoop waste until kitten is 6 months old.

Place the tray with the crystal litter under the litter box frame and remove the waste trap cover on the front of the litter box to make it easier for the kitten to enter and exit. Once your kitten is 6 months old, plug in the Auto-Scoop Crystal Litter Box System and replace the waste trap cover for a box that is convenient and consistently clean.

- Kittens need to use the bathroom after eating, playing or napping. It's always a good idea to place your kitten in the

litter box after these activities to help them understand that this is the place to go to the bathroom.




- Place the litter box away from the kitten's food and water bowl. In the wild, cats use the bathroom away from where they eat and drink as a defense from predators. Placing the litter box near the kitten's food or water could lead to "going outside the litter box" issues.
- For a kitten, the litter box needs to be in a location that is really easy to find since they do not have great bladder control. Getting all the way across the house or down a flight of stairs to find the litter box could result in accidents.
- The litter box should be placed in an open area where your kitten can easily see it. The location should also be safe and quiet so your kitten is not distracted or worried about being startled, such as by loud noises or the family dog.
- Just like you, your kitten likes it clean. Scoop out waste often and change the litter tray every few weeks.
- A kitten's litter box usage is more frequent than that of an adult cat. Stir litter crystals once a week to distribute saturated crystals to better accommodate high urine output.

NOTE: Although the Auto-Scoop Crystal Litter Box System is quiet when running and only runs after use, you may want to leave it unplugged for a few days so your kitten can get used to it without any distractions. If you leave it unplugged, you need to manually scoop solid waste until your kitten is fully transitioned.

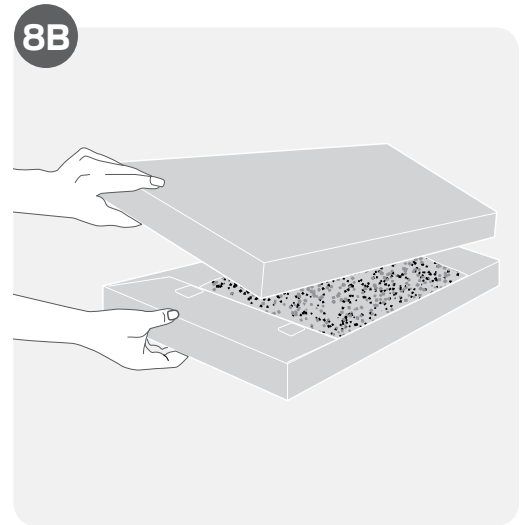
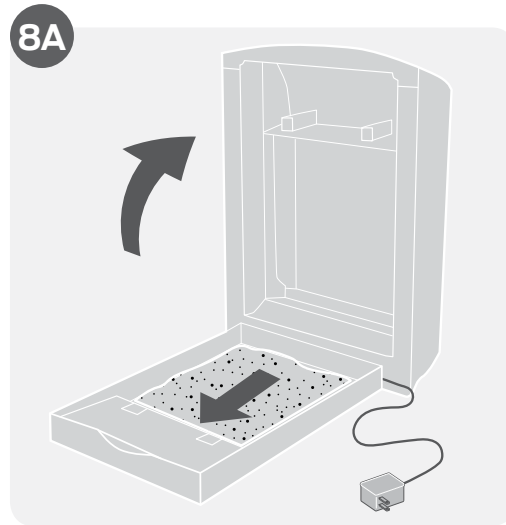
Changing the Litter Tray

Do not add litter or remove waste during normal operation. The crystal litter will remain clean for weeks at a time. See the chart below for the recommended litter tray replacement schedule.

1. Shake the litter box to reduce litter that may have accumulated behind the rake. This will help reduce or prevent litter spillage that may occur when lifting the litter box.
2. Lift up the litter box frame and remove the litter tray (**8A**).
3. Remove the lid from under the litter tray, and use it to cover the top of the tray. Secure the lid with tape if desired or place within a drawstring garbage bag (**8B**).
4. Toss the used litter tray into the trash.
5. Install a new litter tray (see "Setup" on page 5).

Recommended Litter Tray Replacement Chart*	
	20 - 30 Days
	10 - 15 Days
	7 - 10 Days

*Depending on cat age, weight, health & diet



⚠ WARNING

Pregnant women, babies, small children and immune deficient individuals should avoid contact with cat litter waste. Cats' waste may contain toxoplasmosis bacteria that can be harmful to these individuals.

NOTICE

- If solid waste is collecting outside the waste trap, it is time to change the litter tray.
- Increased elimination habits of cats who consume a high diet high in crude fiber, ash and byproducts, cats older than 10 years of age and cats with diabetes, kidney and thyroid problems may result in shorter tray life. Kittens may have softer stool than mature cats, which increases the likelihood that it may stick to the rake.
- Using the tray longer than recommended may result in leakage. Placing the litter box in a high humidity area, such as a bathroom or near a shower, may result in shorter tray life.

Maximizing Litter Tray Life

Here are some tips to help get the most life from the Premier Pet™ Disposable Crystal Litter Tray:

- The crystal litter trays work best if placed AWAY from areas of high humidity such as bathrooms, showers and basements. Moisture in the air can shorten the life of the crystal litter and disposable tray. Place the Auto-Scoop Crystal Litter Box System in a room with moving air to pull away moisture, such as a room with a fan.
- Cats with diets high in crude fiber and ash content will produce more solid waste, which may prematurely fill the waste trap. Consider changing your cat's diet to a food with no byproducts or fillers.
- Increased elimination habits of older cats and cats with diabetes, kidney and thyroid problems may result in a shorter tray life.
- Stirring the crystals once a week may help the tray life for cats that are ill or have a high urine output. Stirring will also distribute saturated crystals, which will also help with cats who consistently urinate in the same spot or do not dig. Be sure to mix in the crystal litter from behind the rake and along the sides of the litter box, but do not mix in litter from under the waste trap.
- Kittens are not as developed, so their solid waste can be runny. Kittens will go through litter trays faster than adult cats, so it is recommended to use the Auto-Scoop litter box with cats that are older than 6 months.

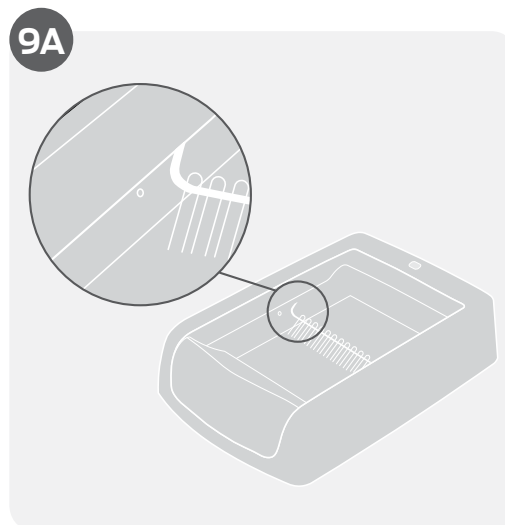
CAUTION

If your kitten is under 6 months of age, leave the unit UNPLUGGED and scoop waste until kitten is 6 months old.

Cleaning

The Auto-Scoop Crystal Litter Box System seldom needs to be cleaned because of its revolutionary design. Surfaces that would normally become soiled are discarded with each disposable litter tray. However, you may occasionally choose to clean the litter box.

1. Unplug the power adaptor from the wall outlet, and disconnect it from the litter box.
2. Lift and remove the litter box frame from the crystal litter tray.
3. Remove the waste trap cover by lifting it up until it pops out of the notches on the litter box base. Be sure to pull straight up on the waste trap cover when removing it. Do not pull up one side at a time! Pulling one side up first can result in the pegs at the base of the waste trap cover getting caught in the notches on the litter box frame and breaking off.
4. Wipe all surfaces on the litter box frame with a cloth or sponge using mild soap and water. Wipe the rake with a sponge or soft brush. DO NOT use bleach or chemicals to clean as they can act as a repellent to your cat.
5. Clean the detection sensors on the interior sides of the litter box frame to make sure they are not blocked (9A).
6. Thoroughly dry all parts before reassembling the litter box.
7. Replace the waste trap cover, and install a new litter tray (see "Setup" on page 5).



⚠ WARNING

Do not submerge or expose the electrical components to water or cleaning solutions.

⚠ CAUTION

Always unplug the unit when not in use, before putting on or taking off parts and before cleaning.

Frequently Asked Questions

Questions	Answers
Can the Premier Pet™ Auto-Scoop Crystal Litter Box System be used with multiple cats?	It is designed for use with one or two cats. If you have more than two cats, it is recommended to have at least one litter box for every two cats.
How will I know when to change the litter tray?	<p>You should change the litter tray when either of the following occurs:</p> <ul style="list-style-type: none"> • The crystal litter is saturated. As the crystals absorb urine, the litter will start to turn yellow. Once the majority of the litter turns yellow, the crystals are nearing their saturation point. When the crystals can no longer absorb any more moisture, you may start to notice an odor from the urine. • The waste trap is full. When the waste trap is full, the waste trap cover will not close completely. You may see small pieces of solid waste sticking out from underneath the lid. You may also start to notice an odor from the solid waste. <p>See “Maximizing Litter Tray Life” on page 9 to help get the most life from the disposable crystal litter trays.</p>
What if my cat goes back into the box soon after it's been used?	The rake will not clean if a cat is in the litter box because it will be obstructing the detection sensors. The countdown timer will reset itself, and the rake will begin to clean 20 minutes after your cat leaves the litter box again.

Troubleshooting

The answers to these questions should help you solve any problems you have with your Auto-Scoop Crystal Litter Box System. If they do not, please contact our Customer Care Center at +1 (866) 381-2785 or visit our website at www.premierpet.com.

LED Indicator	
LIGHT COLOR AND FUNCTION	WHAT IT MEANS
Solid Blue	The Auto-Scoop litter box has power and is working normally with the rake in home position.
Blinking Blue	The Auto-Scoop litter box is counting down to the rake cycle (from 20 minutes) or raking is currently in progress.
Fast Blinking Blue	The rake is paused. This only happens when the manual rake button is pushed while the rake is in motion.
Blue with Red Flashes	A mechanical error has occurred during the rake cycle. Check for any obstructions around the rake and remove them if necessary. To reset, press the manual rake button, and the rake should finish the cycle and return to home position. If the error persists, the LED will change to solid red.
Solid Red	A mechanical error has occurred that cannot be fixed by pressing the manual rake button. Please try additional troubleshooting on page 11. If the issue persists, call our Customer Care Center at +1 (866) 381-2785.

Troubleshooting

PROBLEM

SOLUTION

Blue LED light is flashing red and goes to solid red after pressing the manual rake button

- Check for obstructions around the rake, and remove them if necessary.
- Make sure the magnets on the waste trap cover are properly attached to the metal tabs on the litter tray.
- Check to see if the detection sensors are dirty or obstructed, and clean them if necessary.
- Check if the waste trap is full. If so, change the litter tray.
- Ensure the litter is evenly distributed, and never add extra litter.
- Unplug the litter box, wait 10 seconds, and plug it back in. The rake should return to home position, and the LED light should be solid blue.
- If the above troubleshooting tips do not fix the issue, call our Customer Care Center at +1 (866) 381-2785.

Magnets on waste trap cover do not attach to litter tray

- The waste trap cover may not be properly installed. See “Cleaning” on page 9 to remove and reinstall the waste trap cover.
- Press down on the waste trap cover or lift the waste trap on the litter tray until you hear a “click”, indicating the magnets have attached to the tray.

Litter box frame is not level on litter tray

The litter box should rest on the litter tray when installed, not on the floor. Make sure the litter box is completely level on the litter tray (see “Setup” on page 5).

Terms of Use and Limitation of Liability

1. Terms of Use

The use of this product is subject to your acceptance without modification of the terms, conditions, and notices contained with this product. Use of this product implies acceptance of all such terms, conditions, and notices. If you do not wish to accept these terms, conditions, and notices, please return the product, unused, in its original packaging and at your own cost and risk to the relevant Customer Care location together with proof of purchase for a full refund.

2. Proper Use

Proper Use includes, without limitation, reviewing the entire Product Manual and any specific safety information statements. The specific temperament or size/weight of your pet may not be suitable for this product. If you are unsure whether this product is appropriate for your pet, please consult your veterinarian or certified trainer prior to use. For products used with pets where training is desired, Radio Systems Corporation recommends that these training products are not used if your pet is aggressive and accepts no liability for determining suitability in individual cases.

3. No Unlawful or Prohibited Use

This product is designed for use with pets only. This product is not intended to harm, injure, or provoke. Using this product in a way that is not intended could result in violation of Federal, State, or local laws.

4. Limitation of Liability

In no event shall Radio Systems Corporation or any of its associated companies be liable for (i) any direct, indirect, punitive, incidental, special or consequential damage and/or (ii) any loss or damages whatsoever arising out of or connected with the use or misuse of this product. The Purchaser assumes all risks and liability from the use of this product to the fullest extent permissible by law.

5. Modification of Terms and Conditions

Radio Systems Corporation reserves the right to change the terms, conditions, and notices governing this product from time to time. If such changes have been notified to you prior to your use of this product, they shall be binding on you as if incorporated herein.

Compliance

FCC: USA

This device complies with part 15 of the FCC Rules. Operation is subject to the following two conditions: (1) This device may not cause harmful interference, and (2) this device must accept any interference received, including interference that may cause undesired operation.

NOTE: This equipment has been tested and found to comply with the limits for a Class B digital device, pursuant to part 15 of the FCC Rules. These limits are designed to provide reasonable protection against harmful interference in a residential installation. This equipment generates, uses, and can radiate radio frequency energy and, if not installed and used in accordance with the instructions, may cause harmful interference to radio communications. However, there is no guarantee that interference will not occur in a specific installation. If interference does occur to radio or television reception, which can be determined by turning the equipment off and on, the user is encouraged to try to correct the interference by one or more of the following measures:

- Reorient or relocate the receiving antenna.
- Increase the separation between the equipment and the receiver.
- Connect the equipment to an outlet on a circuit different from that to which the receiver is connected.
- Consult customer care, the dealer, or an experienced radio/TV technician for help.

CAUTION: Modification or changes to this equipment not expressly approved by Radio Systems Corporation may void the user's authority to operate the equipment.

Warranty

One Year Non-Transferable Limited Warranty

This product has the benefit of a limited manufacturer's warranty. Complete details of the warranty applicable to this product and its terms can be found at www.premierpet.com.



Important Recycling Advice

Please respect the Waste Electrical and Electronic Equipment regulations in your country. This equipment must be recycled. At the end of the product life, do not place it in the normal municipal waste system. Please check the regulations in your area or return it to where it was purchased so that it can be placed in our recycling system. If these options are not possible, please contact the Customer Care Center for further information.

Radio Systems Corporation
10427 PetSafe Way
Knoxville, TN 37932
+1 (866) 381-2785
premierpet.com
SFE400-2353

©2019 Radio Systems Corporation