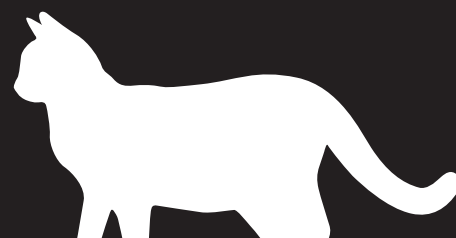
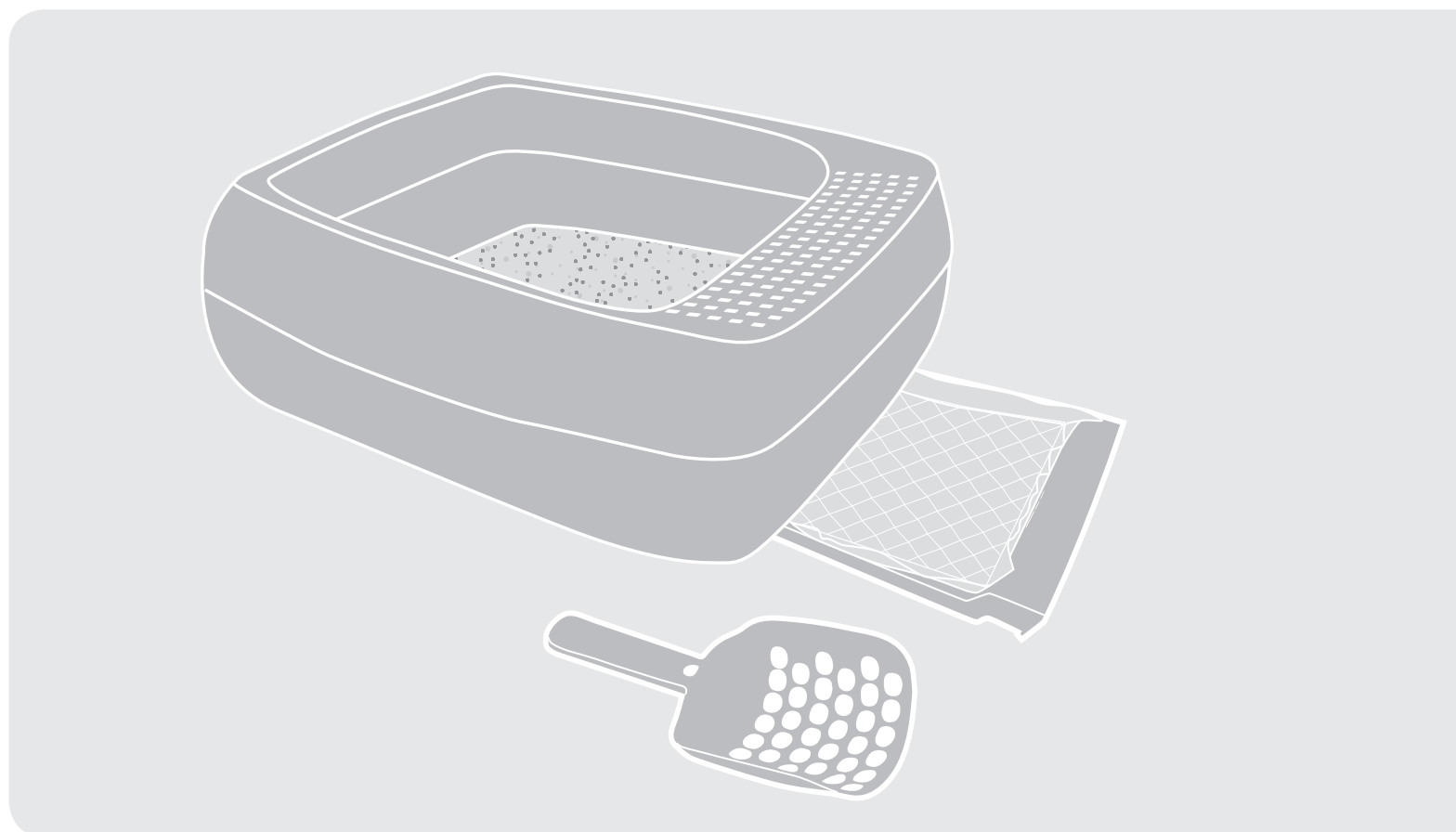


Premier Pet™



Dual-Fresh™ Litter Box System

GWM00-16582 | Product Manual



Have questions about your Litter Box
or need training tips for your pet?

Our Customer Care representatives are here to help you.

Call our USA-based Customer Care Center at

+1 (866) 381-2785

USA & Canada: Mon-Fri 8am-8pm EST | Sat 9am-5pm EST

This product includes a one-year warranty.

Call, click, or chat with us before you return your product.

premierpet.com

Hereinafter Radio Systems Corporation and any other affiliate or Brand of Radio Systems Corporation may be referred to collectively as “We” or “Us”.

IMPORTANT SAFETY INFORMATION

Explanation of Attention Words and Symbols used in this Product Manual



This is the safety alert symbol. It is used to alert you to potential personal injury hazards. Obey all safety messages that follow this symbol to avoid possible injury or death.

⚠ WARNING

WARNING indicates a hazardous situation which, if not avoided, could result in death or serious injury.

⚠ CAUTION

CAUTION, used with the safety alert symbol, indicates a hazardous situation which, if not avoided, could result in minor or moderate injury.

CAUTION

CAUTION, used without the safety alert symbol, indicates a hazardous situation which, if not avoided, could result in harm to your pet.

NOTICE

NOTICE is used to address practices not related to personal injury.

⚠ WARNING

- Keep this bag and pee pad product away from children and pets. To avoid danger of suffocation or choking use only with adult supervision.
- Pregnant women, babies, small children, and immune-deficient individuals should avoid contact with cat litter waste. Cats' waste may contain toxoplasmosis bacteria that can be harmful to these individuals.
- Keep plastic bags away from babies and small children. Do not use in cribs, beds, carriages, or play pens. The thin film may cling to nose and mouth and prevent breathing.

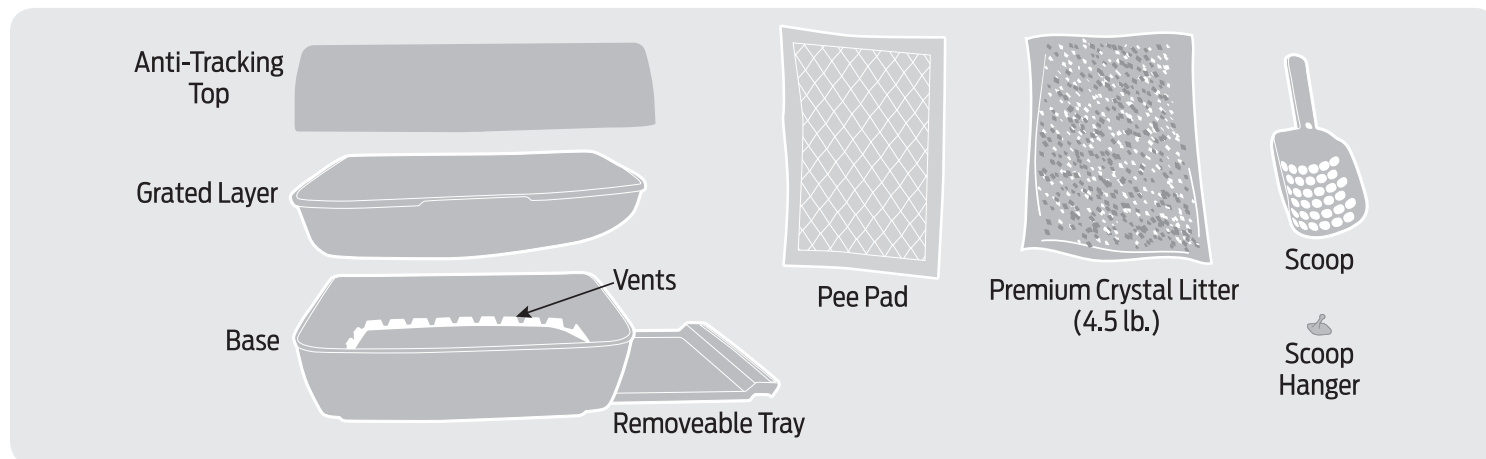
⚠ CAUTION

- Wash your hands after handling used cat litter.

NOTICE

- Do not flush pee pad product down the toilet.
- Do not flush cat litter in toilets or dispose of it outdoors in gutters, storm drains, or gardens.

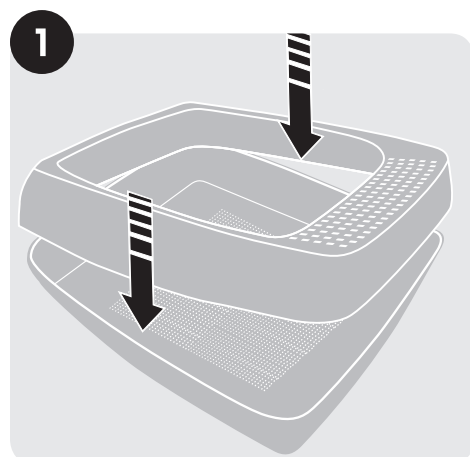
What's Included



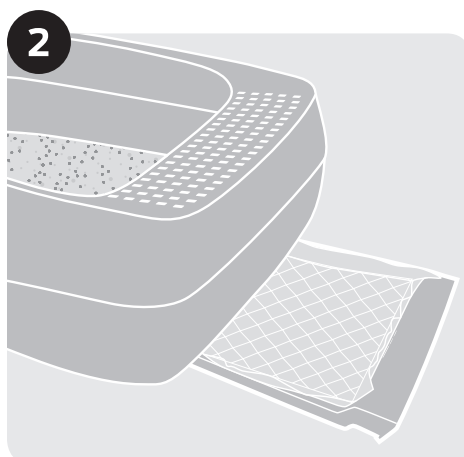
How It Works

The Premier Pet™ Dual-Fresh™ Litter Box System is an easy-to-use litter box that works with Premium Crystal Litter for extra odor control. The Premium Crystal Litter quickly absorbs urine and dries out solid waste. Any runoff falls through the grate onto the disposable, leak-proof pee pad. To absorb even more moisture, the litter box has been designed with vents in the base, allowing air to flow through, which dries out the crystals at a faster rate. Use the scoop to remove the solid waste, and change the litter and pee pads as needed. One bag lasts up to one month in a single-cat household.

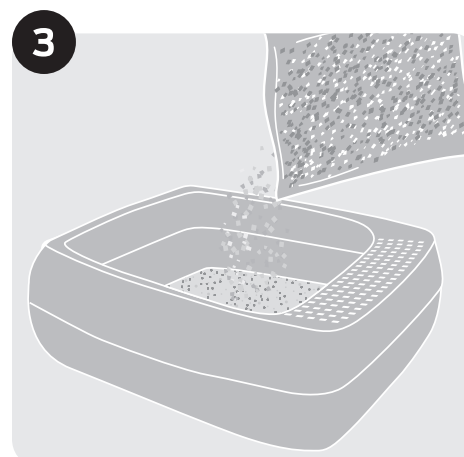
Setup Instructions



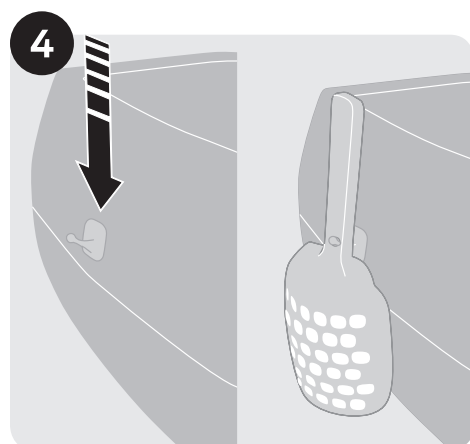
1. Place the anti-tracking top over the grated layer and base, and snap the top and all corners into place.



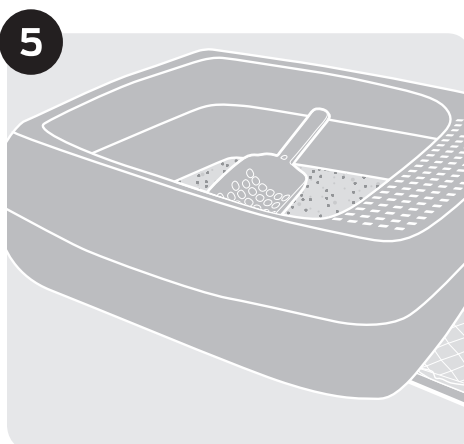
2. Place the pee pad (soft side up) in the tray, and slide the tray back into the base.



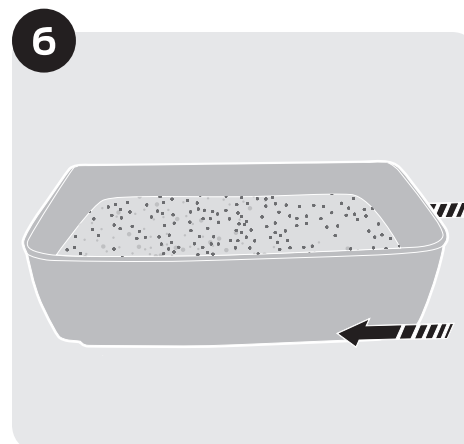
3. Fill the litter box with one full bag of Premier Pet™ Premium Crystal Litter.



4. Optional: Peel the back off of the scoop hanger and attach to the litter box. Store scoop when not in use.



5. Scoop solid waste as needed.



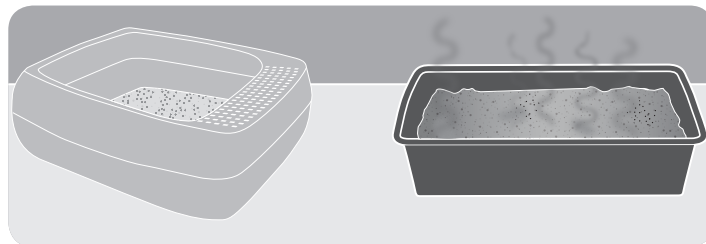
6. To change the litter box, remove the anti-tracking top, grab the base with both hands, and dispose of the litter. Before filling with a new bag of litter, replace the pee pad in the tray with a fresh one.

Tips & Maintenance

Transitioning Your Cat to the Litter Box

Most cats will easily transition to the Dual-Fresh™ Litter Box System, but some cats may require an adjustment period. Here are a few tips to help with the transition:

1. Place the new litter box next to your cat's current litter box. Allow your cat to have access to the old and new litter boxes for at least a week. This time may vary depending on the temperament of your cat.
2. Add a few handfuls of your cat's old litter to the crystal litter. You can also add a few handfuls of the Premium Crystal Litter to your cat's old litter box.
3. Stop cleaning your cat's old litter box, allowing it to remain dirty. Cats prefer a clean litter box, so as the litter in the old litter box gets shallow and its odor increases, this should make the new litter box more appealing.
4. Once your cat has transitioned to the Dual-Fresh™ Litter Box System, remove the old litter box from the area.



Maximizing Premium Crystal Litter Life

Here are some tips to help get the most life from your Premium Crystal Litter:

- The Premium Crystal Litter works best if placed AWAY from areas of high humidity such as bathrooms, showers, and basements. Moisture in the air can shorten the life of the Premium Crystal Litter. Place the Dual-Fresh™ Litter Box System in a room with moving air to pull away moisture, such as a room with a fan.
- Increased elimination habits of older cats and cats with diabetes, kidney, and thyroid problems may result in shorter litter life.
- Stirring the crystals once a week may help the litter life for cats that are ill or have a high urine output. Stirring will also distribute saturated crystals, which will also help with cats who consistently urinate in the same spot or do not dig.

Terms of Use and Limitation of Liability

1. **Terms of Use**
The use of this product is subject to your acceptance without modification of the terms, conditions, and notices contained with this product. Use of this product implies acceptance of all such terms, conditions, and notices. If you do not wish to accept these terms, conditions, and notices, please return the product, unused, in its original packaging and at your own cost and risk to the relevant Customer Care location together with proof of purchase for a full refund.
2. **Proper Use**
Proper Use includes, without limitation, reviewing the entire Product Manual and any specific safety information statements. The specific temperament or size/weight of your pet may not be suitable for this product. If you are unsure whether this product is appropriate for your pet, please consult your veterinarian or certified trainer prior to use. For products used with pets where training is desired, Radio Systems Corporation recommends that these training products are not used if your pet is aggressive and accepts no liability for determining suitability in individual cases.
3. **No Unlawful or Prohibited Use**
This product is designed for use with pets only. This product is not intended to harm, injure, or provoke. Using this product in a way that is not intended could result in violation of Federal, State, or local laws.
4. **Limitation of Liability**
In no event shall Radio Systems Corporation or any of its associated companies be liable for (i) any direct, indirect, punitive, incidental, special or consequential damage, and/or (ii) any loss or damages whatsoever arising out of or connected with the use or misuse of this product. The Purchaser assumes all risks and liability from the use of this product to the fullest extent permissible by law.
5. **Modification of Terms and Conditions**
Radio Systems Corporation reserves the right to change the terms, conditions, and notices governing this product from time to time. If such changes have been notified to you prior to your use of this product, they shall be binding on you as if incorporated herein.

Warranty

One Year Non-Transferable Limited Warranty

This product has the benefit of a limited manufacturer's warranty. Complete details of the warranty applicable to this product and its terms can be found at www.premierpet.com.

Radio Systems Corporation
10427 PetSafe Way
Knoxville, TN 37932
+1 (866) 381-2785
premierpet.com
TZ400-2247
©2018 Radio Systems Corporation