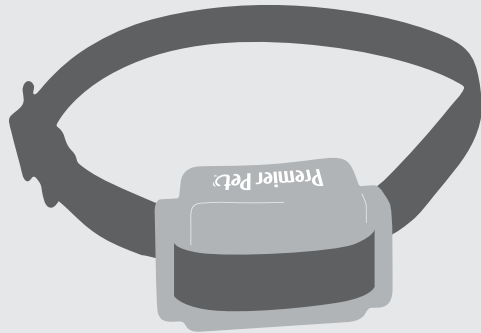
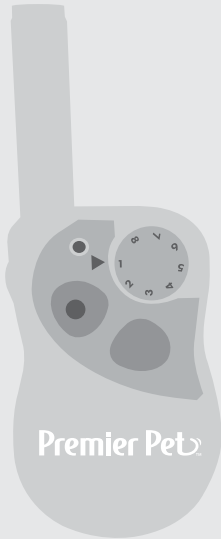


400 Yard Trainer

GDT00-16301 | Product Manual



Have questions about your Remote Trainer or need training tips for your pet?

Our Customer Care representatives are here to help you.

Call our USA-based Customer Care Center at

+1 (866) 381-2785

USA & Canada: Mon-Fri 8am-8pm EST | Sat 9am-5pm EST


This product includes a one year warranty.

Call, click, or chat with us before you return your product.

premierpet.com

Important Safety Information

Explanation of Attention Words and Symbols used in this guide

 This is the safety alert symbol. It is used to alert you to potential personal injury hazards. Obey all safety messages that follow this symbol to avoid possible injury or death.

⚠ WARNING **WARNING**, indicates a hazardous situation which, if not avoided, could result in death or serious injury.

⚠ CAUTION **CAUTION**, used with the safety alert symbol, indicates a hazardous situation which, if not avoided, could result in minor or moderate injury.

CAUTION **CAUTION**, used without the safety alert symbol, indicates a hazardous situation which, if not avoided, could result in harm to your pet.

⚠ WARNING

- Do not use this product if your dog is prone to aggressive behavior. Aggressive dogs can cause severe injury and even death to their owner and others. If you are unsure whether this product is appropriate for your dog, please consult your veterinarian or a certified trainer.
- This device contains Lithium-Ion (Li-Ion) batteries; never incinerate, puncture, deform, short-circuit, or charge with an inappropriate charger. Fire, explosion, property damage, or bodily harm may occur if this warning is not followed.

⚠ CAUTION

- It is vitally important that you and your pet remain safe while learning during on-leash training. Your pet should be on a strong leash, long enough for him to attempt to chase an object, but short enough for him not to reach a road or other hazard. You must be physically strong enough to restrain your pet if he tries to chase something.
- This product is not a toy. Keep it away from the reach of children.

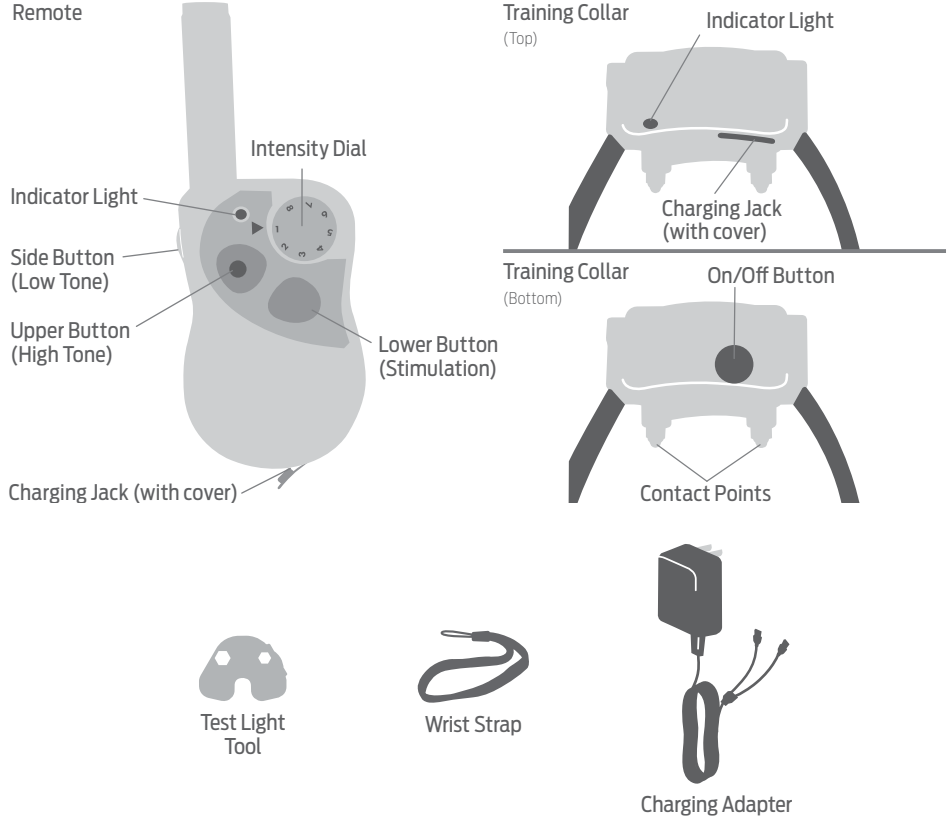
CAUTION

- Proper fit of the collar is important. A collar worn for too long or made too tight on the pet's neck may cause skin damage ranging from redness to pressure ulcers. This condition is commonly known as bed sores.
- Avoid leaving the collar on a pet for more than 12 hours per day.
- When possible, reposition the collar on the pet's neck every 1 to 2 hours.
- Regularly recheck the fit to prevent excessive pressure; follow the instructions in this manual.
- You may need to trim the hair in the area of the contact points. However, never shave the dog's neck; this may lead to a rash or infection.
- Never connect a leash to a collar with contact points. It will cause excessive pressure on the contact points.
- When connecting a leash to a separate collar, do not allow it to put pressure on the training collar.
- Wash the dog's neck area and the contact points of the collar weekly with a damp cloth.
- Examine the contact area daily for signs of a rash or a sore.
- If a rash or sore is found, discontinue using this product until the skin has healed.
- If the condition persists beyond 48 hours, see your veterinarian.
- For additional information on bed sores and pressure necrosis, please visit our website.
- This product is only for use with healthy pets. If you're not certain that your pet is in good health, we recommend that you take your pet to a veterinarian before using this product.

How it Works

The Premier Pet™ 400 Yard Trainer has been proven safe, comfortable, and effective for all pets greater than 8 lbs. and at least 6 months old. This system assists you in controlling your pet in a range up to 400 yards. At the push of a button, the Handheld Remote sends a signal, activating the Training Collar. Using the Remote Trainer consistently and correctly, many misbehaviors that your pet exhibits can be corrected or any basic obedience commands can be taught.

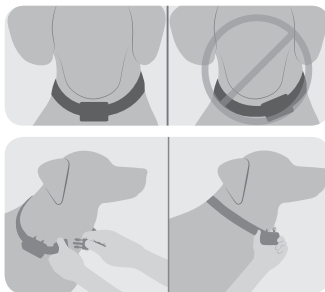
What's Included



Fit the Collar

Important: The proper fit and placement of your Training Collar collar is important for effective operation.

1. Start with the collar turned off and your dog standing comfortably, not sitting.
2. Place the collar on your pet so that the Premier Pet™ logo is right side up and the collar is directly under your dog's chin. Center the contact points underneath your dog's neck, touching the skin. *NOTE: It is sometimes necessary to trim the hair around the contact points to make sure that contact is consistent.*
3. Check the tightness of the collar by inserting one finger between the end of a contact point and your dog's neck. The fit should be snug but not constricting.
4. Allow your dog to wear the collar for several minutes, then recheck the fit. Check the fit again as your dog becomes more comfortable with the collar.



CAUTION

Do not shave the pet's neck as this may increase the risk of skin irritation. The collar should not be worn for more than 12 hours out of every 24-hour period. Leaving the collar on too long could lead to skin irritation.

Charge the Collar and Remote

Excessive charging can shorten battery life. Only charge your remote or collar when the batteries are low.

1. Lift the cover protecting the charging port and connect the charger to the collar and/or remote.
2. Plug the opposite end of the charger into a compatible charging port.
3. Fully charge the training collar and the remote. The indicator light on the remote and the training collar will turn solid green after 12 hours of charging. For the first charge, continue to charge them for an additional 12 hours.
4. When the training collar and remote are charged, replace their rubber covers.

Turn the Collar On/Off

To Turn the Collar On

1. Press and hold the On/Off button until the collar LED is solid green and beeps low to high.
2. Release the On/Off Button. The collar LED will flash green once every 5 seconds. The flashing light indicates the training collar is on and ready to signal from the remote.

To Turn the Collar Off

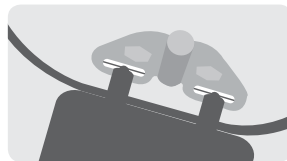
1. Press and hold the On/Off Button until the LED light is solid red and the collar beeps high to low.
2. Release the On/Off Button.

Quick Tip: When you are not using the collar, you will want to turn it off. This will increase the battery life.

NOTE: The remote is always on and will communicate when any button is pressed.

Test the Collar

To test the collar, ensure that the remote is paired with the training collar. Press the test light tool against the contact points on the collar. Push the stimulation button on the remote. The test light will flash.



Pair the Collar

To reset the training collar or to add a new training collar:

1. With the training collar turned off, press and hold the on/off button. The green indicator light will turn on, and the collar will beep low to high.
2. Continue to hold the on/off button until the indicator light has turned off.
3. Press and hold the upper button on the remote until the indicator light flashes 5 times and beeps 5 times. You may need to hold both units 3 feet from each other before this occurs. Once the indicator light has flashed 5 times, the collar has been reset. If the indicator light does not flash 5 times, start again and repeat the process.

Find the Best Stimulation Level

Important: Always start at the lowest level and work your way up.

The remote trainer has 8 different stimulation levels. This allows you to choose the static stimulation that is best for your pet.

Once you have placed the training collar on your pet, it is time to find the “recognition level”. The “recognition level” is the stimulation level that your dog begins to notice. It should not make your pet uncomfortable. Your pet should NOT vocalize or panic when receiving stimulation. If this happens, the stimulation is too high and you need to go back to the previous level.

Follow the steps below to find your pet’s recognition level:

- Starting at level 1 on the intensity dial, press the stimulation button continuously for 1 to 2 seconds.
- If your pet shows no reaction, repeat this several times before moving up to the next level.
- Move up through the stimulation levels until your pet reliably responds to the stimulation.
- If your pet continues to show no response at level 8, check the fit of the training collar. If your pet has long or thick hair, contact Customer Care for a longer set of contact points. Then go back to #1 and repeat the process. If this still does not yield any results, your pet’s hair may need to be trimmed around the contact points.
- If all of these steps have been done and your pet continues to show no reaction to the stimulation, please contact our Customer Care Center.

Terms of Use and Limitation of Liability

1. Terms of Use

The use of this product is subject to your acceptance without modification of the terms, conditions and notices contained with this product. Use of this product implies acceptance of all such terms, conditions, and notices. If you do not wish to accept these terms, conditions, and notices, please return the Product, unused, in its original packaging and at your own cost and risk to the relevant Customer Care location together with proof of purchase for a full refund.

2. Proper Use

Proper Use includes, without limitation, reviewing the entire Operating Guide and any specific safety information statements. The specific temperament or size/weight of your pet may not be suitable for this product. If you are unsure whether this Product is appropriate for your pet, please consult your veterinarian or certified trainer prior to use. For products used with pets where training is desired, Radio Systems Corporation recommends that these training products are not used if your pet is aggressive and accepts no liability for determining suitability in individual cases.

3. No Unlawful or Prohibited Use

This product is designed for use with pets only. This product is not intended to harm, injure or provoke. Using this product in a way that is not intended could result in violation of Federal, State or local laws.

4. Limitation of Liability

In no event shall Radio Systems Corporation or any of its associated companies be liable for (i) any direct, indirect, punitive, incidental, special or consequential damage and/or (ii) any loss or damages whatsoever arising out of or connected with the use or misuse of this product. The Purchaser assumes all risks and liability from the use of this product to the fullest extent permissible by law.

5. Modification of Terms and Conditions

Radio Systems Corporation reserves the right to change the terms, conditions and notices governing this product from time to time. If such changes have been notified to you prior to your use of this product, they shall be binding on you as if incorporated herein.

Warranty

One Year Non-Transferrable Limited Warranty

This Product has the benefit of a limited manufacturer's warranty. Complete details of the warranty applicable to this Product and its terms can be found at premierpet.com.

Compliance

FCC

This device complies with part 15 of the FCC Rules. Operation is subject to the following two conditions: (1) This device may not cause harmful interference, and (2) this device must accept any interference received, including interference that may cause undesired operation.

NOTE: This equipment has been tested and found to comply with the limits for a Class B digital device, pursuant to part 15 of the FCC Rules. These limits are designed to provide reasonable protection against harmful interference in a residential installation. This equipment generates, uses, and can radiate radio frequency energy and, if not installed and used in accordance with the instructions, may cause harmful interference to radio communications. However, there is no guarantee that interference will not occur in a specific installation. If interference does occur to radio or television reception, which can be determined by turning the equipment off and on, the user is encouraged to try to correct the interference by one or more of the following measures:

- Reorient or relocate the receiving antenna.
- Increase the separation between the equipment and the receiver.
- Connect the equipment to an outlet on a circuit different from that to which the receiver is connected.
- Consult customer care, the dealer, or an experienced radio/TV technician for help.

CAUTION: Modification or changes to this equipment not expressly approved by Radio Systems Corporation may void the user's authority to operate the equipment.

For a list of patents protecting this product, please visit: <http://www.radiosystemscorporation.com/patents>

Premier PetTM

Premier Pet™