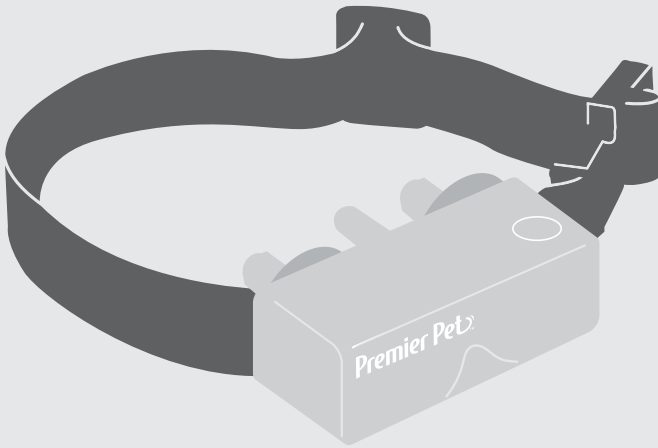




Bark Collar

GBC00-16295 | Product Manual



Have questions about your Bark Collar or need training tips for your pet?

Our Customer Care representatives are here to help you.

Call our USA-based Customer Care Center at

+1 (866) 381-2785

USA & Canada: Mon-Fri 8am-8pm EST | Sat 9am-5pm EST


This product includes a one year warranty.

Call, click, or chat with us before you return your product

premierpet.com

Important Safety Information

Explanation of Attention Words and Symbols used in this guide

 This is the safety alert symbol. It is used to alert you to potential personal injury hazards. Obey all safety messages that follow this symbol to avoid possible injury or death.

⚠ WARNING **WARNING**, indicates a hazardous situation which, if not avoided, could result in death or serious injury.

⚠ CAUTION **CAUTION**, used with the safety alert symbol, indicates a hazardous situation which, if not avoided, could result in minor or moderate injury.

CAUTION **CAUTION**, used without the safety alert symbol, indicates a hazardous situation which, if not avoided, could result in harm to your pet.

⚠ WARNING

- Do not use this product if your dog is prone to aggressive behavior. Aggressive dogs can cause severe injury and even death to their owner and others. If you are unsure whether this product is appropriate for your dog, please consult your veterinarian or a certified trainer.
- There is a risk of explosion if a battery is replaced by an incorrect type. Do not short circuit, mix old and new batteries, dispose of in fire or expose to water. When batteries are stored or disposed, they must be protected from shorting. Dispose of used batteries properly.

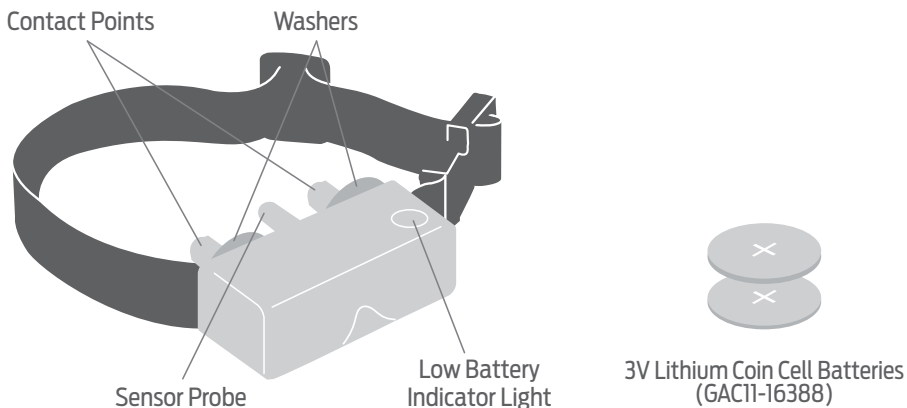
⚠ CAUTION

- This product is not a toy. Keep it away from the reach of children. Use it only as a bark deterrent.

CAUTION

- Proper fit of the collar is important. A collar worn for too long or made too tight on the pet's neck may cause skin damage ranging from redness to pressure ulcers. This condition is commonly known as bed sores.
- Avoid leaving the collar on a pet for more than 12 hours per day.
- When possible reposition the collar on the pet's neck every 1 to 2 hours.
- Regularly recheck the fit to prevent excessive pressure; follow the instructions in this manual.
- You may need to trim the hair in the area of the contact points. However, never shave the dog's neck; this may lead to a rash or infection.
- Never connect a leash to a collar with contact points. It will cause excessive pressure on the contact points.
- When connecting a leash to a separate collar, do not allow it to put pressure on the collar.
- Wash the dog's neck area and the contact points of the collar weekly with a damp cloth.
- Examine the contact area daily for signs of a rash or a sore.
- If a rash or sore is found, discontinue using this product until the skin has healed.
- If the condition persists beyond 48 hours, see your veterinarian.
- For additional information on bed sores and pressure necrosis, please visit our website.
- This product is only for use with healthy pets. If you're not certain that your pet is in good health, we recommend that you take your pet to a veterinarian before using this product.

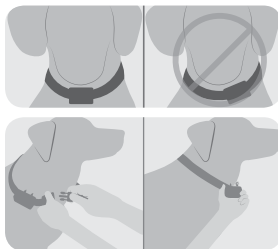
What's Included



Fit the Collar

Important: The proper fit and placement of your Bark Collar is important for effective operation.

1. Start with the collar turned off and your dog standing comfortably, not sitting.
2. Remove all other collars your dog may be wearing and place the bark collar around his neck. Place the collar on your pet so that the Premier Pet™ logo is right side up and the collar is directly under your dog's chin. Center the contact points underneath your dog's neck, touching the skin. *NOTE: It is sometimes necessary to trim the hair around the contact points to make sure that contact is consistent.*
3. Check the tightness of the collar by inserting one finger between the end of a contact point and your dog's neck. The fit should be snug but not constricting.
4. Allow your dog to wear the collar for several minutes, then recheck the fit. Check the fit again as your dog becomes more comfortable with the collar.



CAUTION

Do not shave the pet's neck as this may increase the risk of skin irritation. The collar should not be worn for more than 12 hours out of every 24-hour period. Leaving the collar on too long could lead to skin irritation.

To Insert and Remove the Batteries

1. Turn the battery door counter-clockwise using a coin.
2. Install two (2), 3-volt batteries positive (+) side out, negative (-) side pointed toward inside of battery unit. Place the lower 3-volt battery under the positive battery contact. Insert the upper 3-volt battery against the positive battery contact.
3. Replace the battery door using a coin as shown. Turn the battery door clockwise.
4. Replacement batteries (3-volt batteries, GAC11-16388) can be found at many retailers. Contact the Customer Care Center or visit our website to locate a retailer near you.



WARNING

There is a risk of explosion if a battery is replaced by an incorrect type. Do not short circuit, mix old and new batteries, dispose of in fire or expose to water. When batteries are stored or disposed, they must be protected from shorting. Dispose of used batteries properly.

Regular Maintenance

- Check Contact Points for tightness weekly. *Note: Do not adjust the factory preset Sensor Probe.*
- Clean Contact Points with alcohol weekly. *Note: Remove the battery and discharge the Bark Control Collar before touching the Contact Points.*
- Check your dog's neck for irritation and wash neck weekly.

Warranty

One Year Non-Transferrable Limited Warranty

This Product has the benefit of a limited manufacturer's warranty. Complete details of the warranty applicable to this Product and its terms can be found at premierpet.com.

Terms of Use and Limitation of Liability

- Terms of Use**
This Product is offered to you conditioned upon your acceptance without modification of the terms, conditions and notices contained herein. Usage of this Product implies acceptance of all such terms, conditions, and notices.
- Proper Use**
This Product is designed for use with pets where training is desired. The specific temperament of your pet may not work with this Product. If you are unsure whether this is appropriate for your pet, please consult your veterinarian or certified trainer.
- No Unlawful or Prohibited Use**
This Product is designed for use with pets only. This pet training device is not intended to harm, injure or provoke. Using this Product in a way that is not intended could result in violation of Federal, State or local laws.
- Limitation of Liability**
In no event shall Radio Systems Corporation™ be liable for any direct, indirect, punitive, incidental, special or consequential damages, or any damages whatsoever arising out of or connected with the use or misuse of this Product. Buyer assumes all risks and liability from the use of this Product.
- Modification of Terms and Conditions**
Radio Systems Corporation™ reserves the right to change the terms, conditions and notices under which this Product is offered.

Perchlorate Battery

Perchlorate Material – special handling may apply. See www.dtsc.ca.gov/hazardouswaste/perchlorate.



Battery Disposal

Separate collection of spent batteries is required in many regions; check the regulations in your area before discarding spent batteries. At the end of the product life, please contact our Customer Care Center to receive instructions on proper disposal of the unit. Please do not dispose of the unit in household or municipal waste. For a listing of Customer Care Center telephone numbers in your area, visit our website at www.premierpet.com.

Compliance

FCC

This device complies with part 15 of the FCC Rules. Operation is subject to the following two conditions: (1) This device may not cause harmful interference, and (2) this device must accept any interference received, including interference that may cause undesired operation.

CAUTION: Modification or changes to this equipment not expressly approved by Radio Systems Corporation may void the user's authority to operate the equipment.

NOTE: This equipment has been tested and found to comply with the limits for a Class B digital device, pursuant to part 15 of the FCC Rules. These limits are designed to provide reasonable protection against harmful interference in a residential installation. This equipment generates, uses, and can radiate radio frequency energy and, if not installed and used in accordance with the instructions, may cause harmful interference to radio communications. However, there is no guarantee that interference will not occur in a specific installation. If interference does occur to radio or television reception, which can be determined by turning the equipment off and on, the user is encouraged to try to correct the interference by one or more of the following measures:

- Reorient or relocate the receiving antenna.
- Increase the separation between the equipment and the receiver.
- Connect the equipment to an outlet on a circuit different from that to which the receiver is connected.
- Consult customer care, the dealer, or an experienced radio/TV technician for help.

For a list of patents protecting this product, please visit: <http://www.radiosystemscorporation.com/patents>